



HDK Capital Investments Inc.
Commercial and Industrial Real Estate

***Available +/- 63,000 SQ. FT.
Distribution Warehouse / Showroom / Office***



1220 SW 1st Court, Pompano Beach FL

- ◆ For Sale – Asking \$5,000,000.00 / \$79 SF / For Lease \$8.00 SF Gross
 - ◆ Two Buildings - +/- 15,000 SF and +/- 48,000 SF
 - ◆ Great Exposure To I-95, Andrews Avenue and Atlantic Blvd
 - ◆ 18' – 23' Clear Ceiling Height
 - ◆ 3 Phase Power
 - ◆ 12 Dock High Doors / 1 Ramped up Door
-

HDK Capital Investments, Inc.
Commercial and Industrial Real Estate
Daniel J. Du Charme

www.browardindustrial.com

Email: Dan@HDKCapital.com

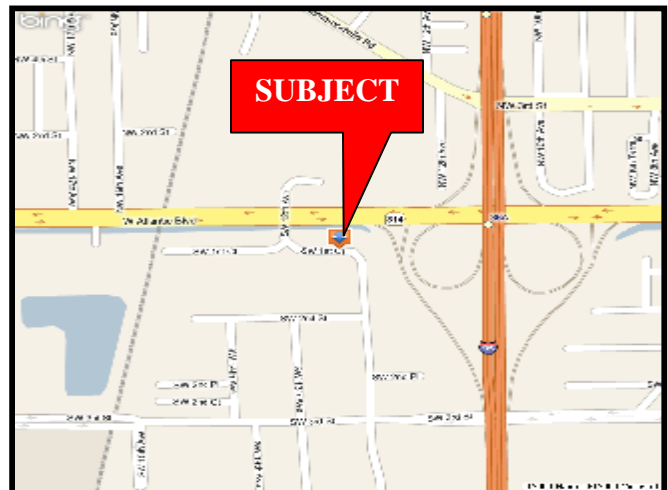
www.HDKCapital.com

2929 E Commercial Blvd, Suite 500, Ft. Lauderdale, FL 33308

PH: (954) 316-9774

FAX: (954) 636-4832

Note: This offer subject to errors, omissions, Prior sale / lease or withdrawal without notice



2929 E Commercial Blvd, Suite 500, Ft. Lauderdale, FL 33308

PH: (954) 316-9774

FAX: (954) 636-4832

Note: This offer subject to errors, omissions, Prior sale / lease or withdrawal without notice

Aerial



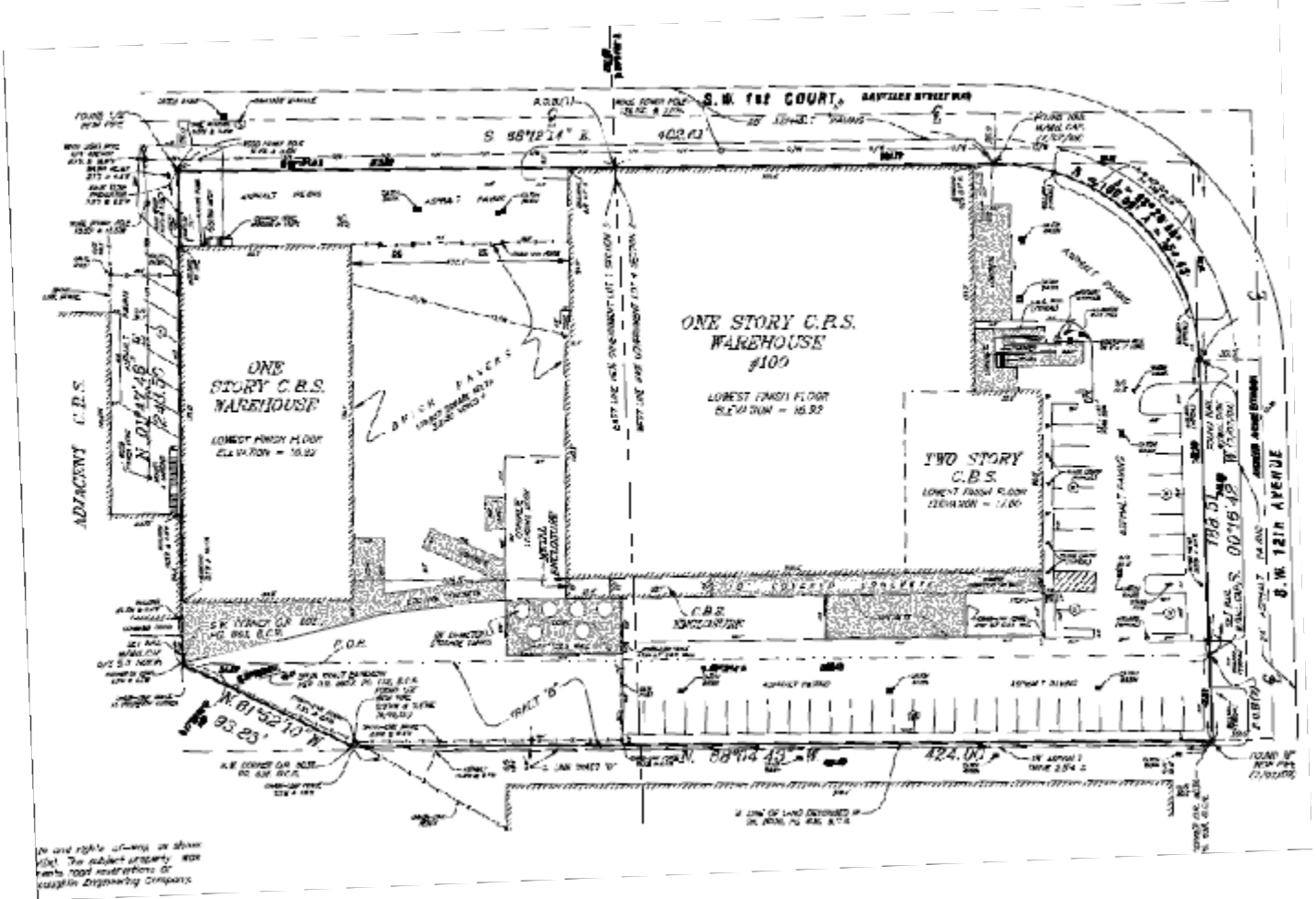
2929 E Commercial Blvd, Suite 500, Ft. Lauderdale, FL 33308

PH: (954) 316-9774

FAX: (954) 636-4832

Note: This offer subject to errors, omissions, Prior sale / lease or withdrawal without notice

SURVEY



2929 E Commercial Blvd, Suite 500, Ft. Lauderdale, FL 33308

PH: (954) 316-9774

FAX: (954) 636-4832

Note: This offer subject to errors, omissions, Prior sale / lease or withdrawal without notice